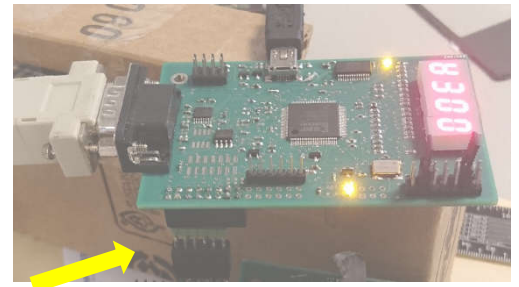
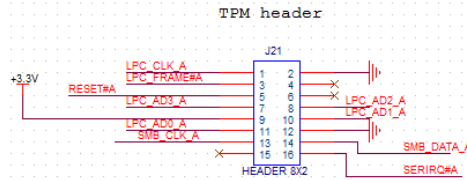


LPC POST SERIAL interface Versions

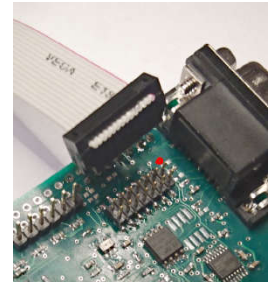
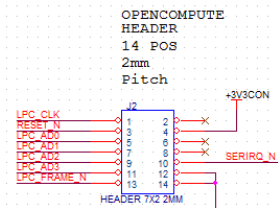
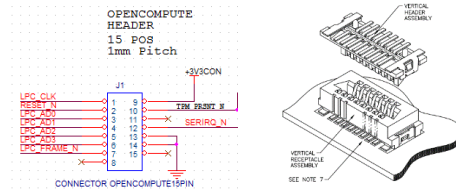
Order code:
LPCPOST SER L3 S00

- The 2x8 female-header/socket fits onto the standard "TPM"/"LPC" header (0.1"pitch) located on the target PC board.



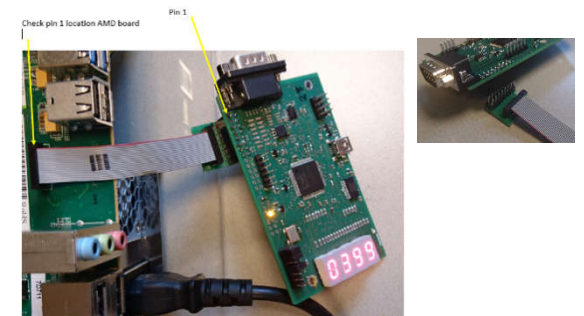
Order code:
LPCPOST SER L3 S05

- The 2x7 header (2 mm pitch) in combination with a flex cable fits on the Open Compute header.
- New Open Compute header 15 pins (1 mm pitch) a small adapter is include to convert to the 2 mm pitch header on the LPCPOST L3 board.



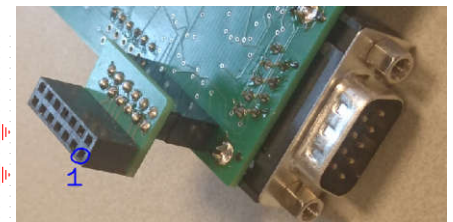
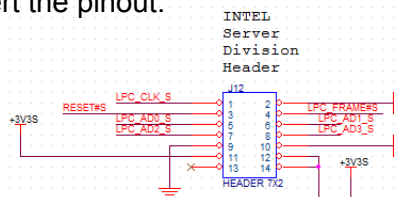
Order code:
LPCPOST SER L3 S06

- AMD reference boards uses the standard TPM/LPC header (2x8 / 2x10 pins), but with small 1.27 mm pitch header. A flex cable is used to connect with LPCPOST board.



Order code:
LPCPOST SER L3 S07

- INTEL server boards uses different pinout of LPC header. An adapter is used to convert the pinout.



Contact ELTAN for other
Interface formats

All rights reserved
ELTAN BV 2018