

LPC POST

The LPC POST displays: Port 80 BIOS debug code.
The adapter fits onto a header located on a PC board.

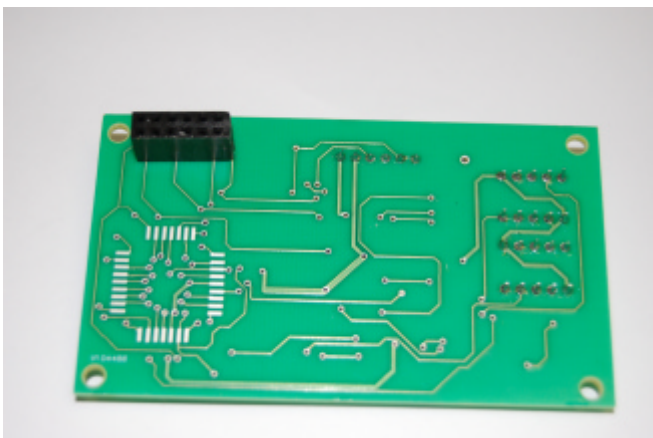
Applications

- Port 80 code display
- Debugging x86 PC computer board
- PC computer repair tool
- In system BIOS programming
- Functional x86 board fixtures test tool



Usage instructions

- Place LPC Post adapter onto the 12 pins header located on the main board
- Power up system and BIOS Port 80 code on double seven segment is displayed
- The adapter is designed to use in ESD protected laboratory environment or use inside a chassis.



Power consumption

- Low power consumption on +3.3 Volt
- 2 seven segment display components
- Xilinx EPLD and Firmware Hub

Mechanical dimensions

Board size: 85 mm x 49 mm

Operating temperature

0 °C – 50 °C

Multiple versions of LPC POST

This version of the LPC POST contains: Female LPC header, capable to fit on commonly used LPC TPM expansion header. The LPC POST header also supports: “selectable Firmware Hub boot device” which gives the ability to select between FWH on board and on LPC POST.

Another LPC POST version is equipped with the 32 pins PLCC adapter, capable to fit into 32 pins PLCC Firmware Hub socket. An alternative address can be selected to display Port 90 code.

Special configurations and custom design is available on request.

User Manual

The LPC POST user manual includes: connector pin definitions, schematics, Phoenix® and Award™ BIOS code table, Xilinx re-programming instructions, and Test measurement assignment test point

Ordering information

Contact ELTAN about your requirements



ELTAN BV
Het Schild 13
The Netherlands
www.eltan.com

5275 EB Den Dungen
+31 (0) 73 – 5944660
info@eltan.com